

# Drain Cleaners

## Up to 4" Capacity Drum Machines

### Model K-3800 – For 3/4" to 4" (19-100mm) Drain Lines

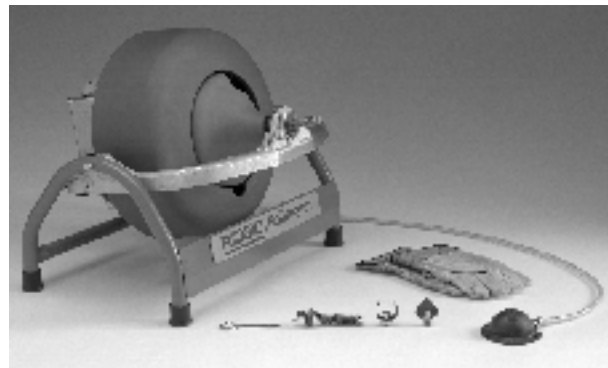
- A powerful, easy to transport, versatile machine for cleaning indoor drains. Requires minimal set-up to clean sink lines, floor drains, roof vents.
- Rugged, corrosion-resistant molded cable drum won't dent or rust. The drum tilt-adjusts for proper cable feed angle. Inner-drum guards against cable flip-over.
- Cable drum's quick-release and built-in hand-holds allow easy cable size changes and balanced, two-handed transport.
- Standard drum capacity is 100' of 3/8" or 90' of 1/2" (30m/10mm or 27m/12mm) continuous length cable:
  - 3/8" cable best for 1 1/2" to 3" lines up to 100'.
  - 1/2" cable best for 2" to 4" lines up to 90'.
- Optional sink drum holds up to 50' of 5/16" or 1/4" (15m/8mm) cable.
  - Ideal for cleaning through 3/4" to 1 1/2" sink traps.
- Powerful 1/12 HP Universal Motor spins cable at 240 RPM max. When cable hits blockage, motor gears down automatically to deliver more power, enhance operator control.
- Tools snap connect to cable in seconds.
- CSA Approved
- Approved to UL Standards (NRTLCL)
- IW(Integral Wound) cables available. IW cables are slightly stiffer and kink resistant. All IW cables use 3/8" T-200 series cutters.



Model K-3800

### Machine Options

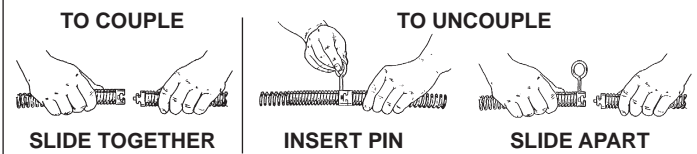
Catalog No.		Model No.	Description	Weight	
115V	220-240V			lb.	kg
53107	59462	K-3800	K-3800 Machine w/gloves	42	19,0
53112		K-3800 w/C-31	K-3800 Machine w/Std. Equip. – C-31, 3/8" x 50' Cable – T-202 Bulb Auger – T-205 "C" Cutter – T-211 Spade Cutter – A-13 Pin Key – Pair of gloves	65	29,5
53117	63827	K-3800 w/C-32	K-3800 Machine w/Std. Equip. – C-32, 3/8" x 75' Cable – T-202 Bulb Auger – T-205 "C" Cutter – T-211 Spade Cutter – A-13 Pin Key – Pair of Gloves	71	32,2
53122	63822	K-3800 w/C-45	K-3800 Machine w/Std. Equip. – C-45, 1/2" x 75' Cable – T-102 Funnel Auger – T-142 Knife Blade Cutter – T-107 Spade Cutter – A-12 Pin Key – Pair of gloves	83	37,7
53127	–	K-3800 w/C-46	K-3800 Machine w/Std. Equip. – C-46, 1/2" x 90' Cable – T-102 Funnel Auger – T-142 Knife Blade Cutter – T-107 Spade Cutter – A-12 Pin Key – Pair of Gloves	91	41,3



K-3800 w/C-32



### FAST, SIMPLE METHOD TO CONNECT TOOLS



For C-4, C-6, C-7, C-8, C-9, C-10, C-11, C-12, C-14, C-15, C-31, C-32, C-33, C-44, C-45, and C-46.