

RIDGID® - WD1851

16 Gallon Wet/Dry Vac

This RIDGID® 16 gallon High Performance wet/dry vac is designed to deliver the powerful suction, large capacity, rugged construction, unique features and excellent mobility that Pro's demand for job site use. The powerful 6.5 Peak HP motor easily handles the toughest job site clean-up tasks. A 3-layer fine dust filter captures dry wall dust. Moving up & down steps or across rough terrain is a snap with the large diameter, fixed rear wheels. Add a top handle with a cord wrap, heavy duty 2-piece drum construction, an accessory storage bag attached to a quick release handle plus patented Scroll Noise Reduction® for quiet operation and you've got a wet/dry vac that meets the demands of Pro's on the job site.

FEATURES	BENEFITS
• 6.5 Peak Hp Motor	Provides industry leading power and performance.
• Sound Reduction Technology	Scroll Noise Reduction® is a patented feature that provides quiet operation by precisely controlling the flow of air through the vac.
• Sturdy Cart, Push Handle, Large Rear Wheels	These features act together to allow vac to travel easily up/down stairs and over rough terrain.
• Quick Release Push Handle	Depress two spring loaded ball bearings to quickly remove handle & accessory storage bag as a unit. Makes emptying debris from drum quick, easy, and much more convenient.
• 2-Piece Drum Construction	Provides improved, more rugged construction to meet the higher demands found on the job site.
• 3-layer Fine Dust Filter	Captures fine dust particles such as dry wall dust.
• Tug-A-Long® Locking Hose	Positively locks 7-foot hose to the vac. Hose won't pull loose during use.
• Large Carry Handle	Allows easy lifting of vac into service vehicle.
• Long Cord plus Cord Storage	Extra long 20' power cord wraps neatly around carry handle.
• Powerful Blowing Performance	Move hose to exhaust port to blow debris from garages, decks, sidewalks, etc.
• Included Accessories	2-1/2" x 7' Tug-A-Long® Locking Hose, 2 Extension Wands, Utility Nozzle, Car Nozzle, Wet Nozzle, Crevice Tool, & a Muffler/Diffuser

SPECIFICATIONS	
Drum Size	16 gal.
Motor	
- Peak Horsepower	6.5
- Air Watts	336
- Voltage	120
- Amps	12.0
Cord Length	20'
Construction	High Impact Polypropylene
U.L. Listed	Yes
Filter Surface Area	1,600 sq. in.
Replacement Filters	VF4000, VF5000, VF6000
Accessory Size	2-1/2"
Shipping Weight	30.5 lbs.
Net Weight	26.3 lbs.



Tug-A-Long® Locking hose



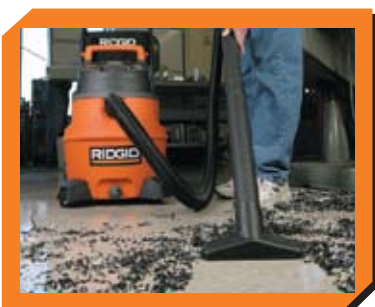
Vac with Accessories & Filter



Rear Wheels-Rough Terrain Mobility



Wet Pick-up - Basements, etc.



Dry Pick-up - Workshop, Garage etc.



Large Drain for Emptying Water